



COMPLETE RANGE OF WATERPROOFING SOLUTIONS

WWW.MIXMASTERSCC.COM

Greetings!

First we would like to introduce ourselves as a manufacturer of construction chemicals / water proofing materials like Concrete Admixture, Coating, We have attached here with our brief introduction for your kind perusal.

WE STARTED THIS COMPANY BY 2012 AS A CONSTRUCTION CHEMICALS MANUFACTURING AND WATERPROOFING APPLICATION. MIXMASTERS CHEMICALS HAVING A MANUFACTURING UNIT IN CHENNAI, MANUFACTURING ;LIQUID BASE PRODUCTS PAST 10 YEARS.

Mixmasters Vision Is To Be Leading And Preferred Full-Service Supplier Of Innovative, Easy To Implement And Reliable Waterproofing Services For Protection Of Buildings And Infrastructure. We Provide High Performance Waterproofing Solution For The Best Results.

MISSION

Mixmasters Waterproofing Is Fully Committed To Understanding Customers Need And To Always Exceeding Their Expectations. Mixmasters Makes It Easy And Safe For Customers By Providing A Full Range Of High Quality Products And The Highest Level Of Service On The Services Offered.

First We Deeply Analysis The Building Infrastructure After That Our Expert Team Will Be Provide Recommendation For The Problems.

Mixmasters Through A Strong Local Presence , Smart Logistics Solutions And , Most Importantly , A Team Of Highly Motivated Employees.

DESCRIPTION OF SERVICES

ROOF WATERPROOFING

TERRACE GARDEN WATERPROOFING

EXPANSION JOINT TREATMENT

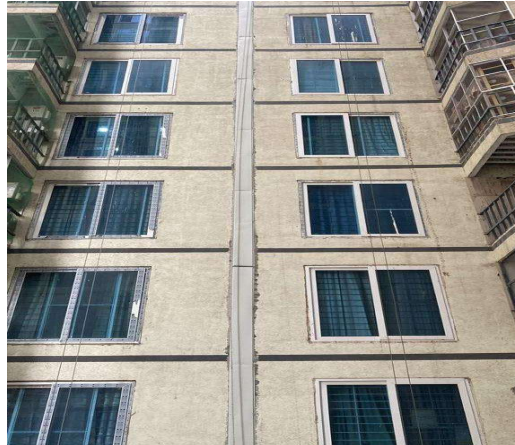
WATER TANK WATERPROOFING

SWIMMING POOL WATERPROOFING

INJECTION GROUTING

APP MEMBRANE APPLICATION

POLYETHYLENE MEMBRANE APPLICATION





OUR CLIENTS

- CAPITALAND ASCENDAS - EXPANSION JOINTS TREATMENT
- THE METROZONE - EXPANSION JOINTS TREATMENT
- SEVEN STAR INFRA - INTEL CAFETERIA
- DIKISHIKA ENG - AQUA CULTURE
- OASIS EPC SOLUTIONS - SEWAGE & WATERTREATMENT PLANT
- RARA ENTERPRISES - RESIDENTIAL PROJECTS
- MEAGAN INFRA LTD - CROMA (TATA)
- WABAG LIMITED - SEA WATER TO DRINKING WATER CONVERSION PLANT
- SATHYABAMA INSTITUTE - EXPANSION JOINTS

RS INFRA & CONSTRUCTION

- CHIKMAGLUR WASTE WATER MANAGEMENT

DEEJAY PROJECTS

- BASEMENTS AND RETAINING WALLS